



PowerBrick+

12v Lithium-Ion battery pack



12V battery pack - Lithium Iron-Phosphate (LiFePO₄) - 70Ah

- Ultra safe **Lithium Iron Phosphate** chemistry (no thermal run-away, no fire or explosion risks)
- **Embedded BMS** (Battery Management System)
- No **Lead**, no **rare earths**, no **acid**, no **degassing**
- **High Service Life : 3000 cycles** and more (see chart)
- Calendar life > **10 years**
- Excellent **temperature** robustness (-20 °C up to +60 °C)
- **Flexible** deployment : up to **16 packs in parallel** and **4 in series**
- **Constant power** during discharge (very low internal resistance)
- **Partial or deep discharge** allowed up to 100 %
- **Very low Peukert's losses** (energy efficiency >98 %)
- **Very low self discharge** (<3 % per month)
- **No memory effect**
- About **50 % lighter** and **40% smaller** than equivalent Lead-AGM battery with same usable energy
- **Certification :CE, RoHS, UN 38.3**

Technical Specifications

| | | |
|--|-----------------------------------|---|
| Electric | Nominal voltage | 12.8V |
| | Nominal capacity | 70 Ah |
| | Stored energy | 896 Wh |
| | Internal resistance | ≤ 40mΩ |
| | Cycles | >3000 cycles (see chart) |
| | Self discharge | < 3% per month |
| | Energy efficiency | > 98% |
| | Standard Charge | Charge voltage |
| Charge mode | | CC/CV : Constant Current / Constant Voltage |
| Continuous charge current / Maximum charge current | | 35 A / 70A |
| BMS charge cut-off voltage | | 14.8V ± 0.1V |
| Standard Discharge | Instant peak discharge current | 250±30 A (max 100ms) |
| | Continuous discharge current | 100A (1.28 kW) |
| | Maximum discharge current (< 30s) | 150 A (1.92 kW) |
| | BMS discharge cut-off voltage | 10 V |
| Environment | Charge temperature range | 0°C to +60°C |
| | Discharge temperature range | -20°C to +60°C |
| | Storage temperature | 0°C to +50°C @60±25% relative humidity |
| | IP protection level | IP 66 |
| Mechanical | Cell assembly | 18650 - 4S46P |
| | Casing material | ABS |
| | Dimensions | L : 228mm x P : 138mm x H : 210 mm |
| | Weight | 9.8 kg |
| | Terminal | M8 bolt |



APPLICATIONS

- **Electrical vehicles and utilities**
- **Robotics and AGVs**
- **Solar and wind energy storage**
- **Marine**
- **Street lightning**
- **CCTV and security camera**
- **UPS, electric back-up**
- **Telecom**
- **Medical equipments**
- • •

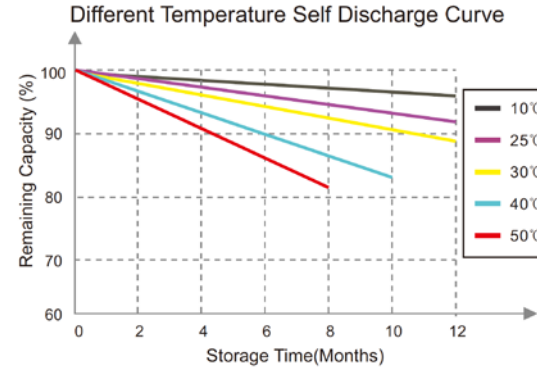
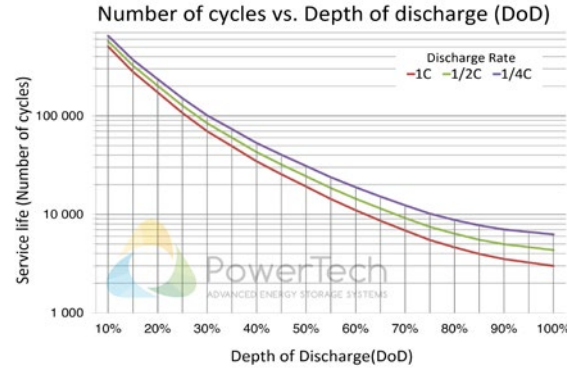
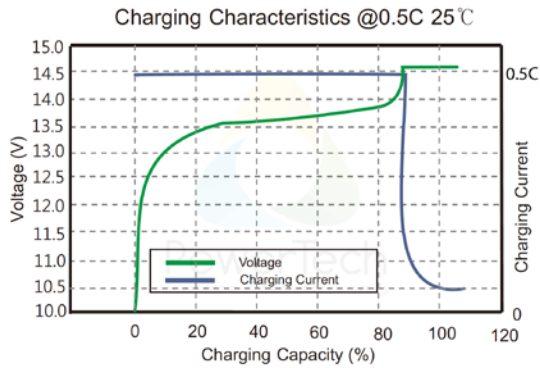
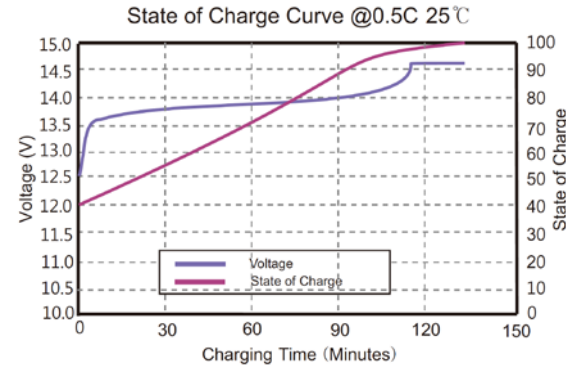
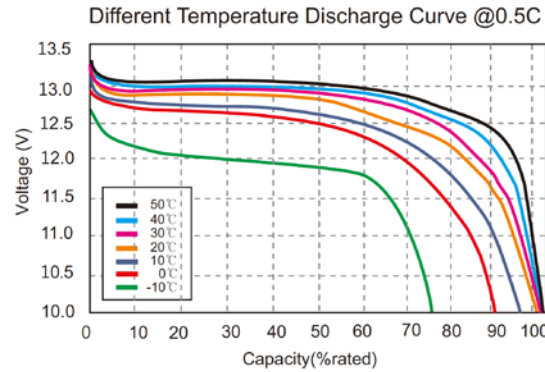
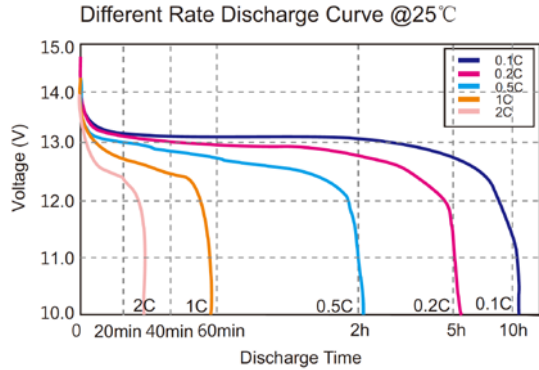


PowerBrick+

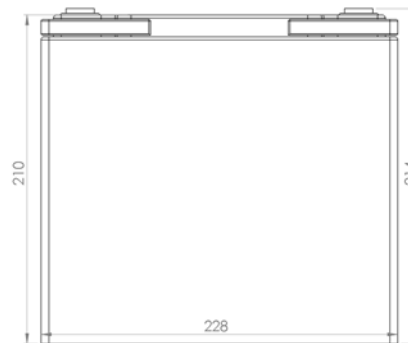
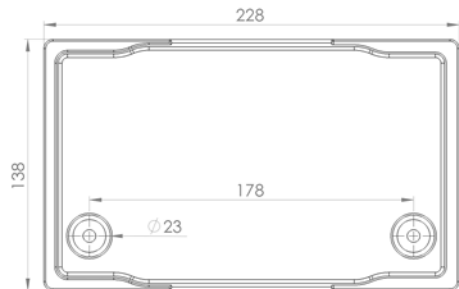
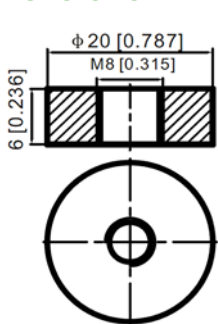
12v Lithium-Ion battery pack



Charts and curves



Dimensions



PowerTech
systems

V1.3

PowerTech Systems SAS
ZA Charles Renard - Batiment A1
6 Bld Georges Guynemer
78210 ST CYR L'ÉCOLE - France

SAS au capital de 600 000 Euros
SIREN : 793926577 - TVA : FR33793926577

www.powertechsystems.eu
+33 185 400 970
contact@powertechsystems.eu