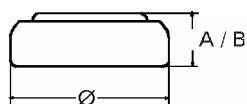


Data Sheet

Type Number 20395
Designation IEC SR 57
System Silver oxide / Zinc /
NaOH - Electrolyte



Nominal Voltage 1,55 V
Typical Capacity C 42 mAh
 Load 13 kOhm, at 20°C down to 1.2 V

Weight (approx.) 0,75 g
Volume 0,17 ccm
Coding..... Date of Manufacturing
Month / Year

Temperature Ranges

	min	max.
Storage	-10°C	65°C
Discharge	-10°C	65°C

Dimensions

	min	max.
Diameter (Ø)	9,15	9,50
Height (A/B)	2,4	2,7

Segment Watch / Low Drain

Main Applications Watch
Electronic

Typical Capacities (at 20°C)

Discharge Type	Load	End Voltage: 1.2 V
Continuous	13000 Ω	Time: 375 h
24h/d,7d/w		Capacity [mAh]: 42
Current [μA]:	120	Energy [mWh]: 67