



protectline  
powered by tuncmatik

# Newtech PRO

UNINTERRUPTIBLE  
POWER SUPPLY

# UPS

## Newtech PRO

6 - 10 kVA (1/1) online

10 - 20 kVA (3/1) online



Newtech PRO  
6 kVA (1/1)

CAPACITY

18 PC	18 MONITOR
6 PRINTER	6 PC 30 min.

Newtech PRO  
10 kVA (1/1)

CAPACITY

30 PC	30 MONITOR
10 PRINTER	10 PC 30 min.

Newtech PRO  
10 kVA (3/1)

CAPACITY

30 PC	30 MONITOR
10 PRINTER	10 PC 30 min.

Newtech PRO  
20 kVA (3/1)

CAPACITY

60 PC	60 MONITOR
20 PRINTER	20 PC 30 min.



tuncmatik  
www.tuncmatik.com pure power

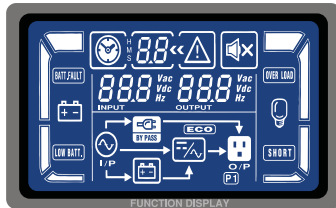


tuncmatik

New Generation Newtech  
Newtech PRO

UPS  
6 - 10 - 20 kVA online

Newtech Pro draws attention with its elegant design and user friendly advanced LCD panel.



**Real online double conversion topology with sine wave output**  
Reliable real sinus at output compatible with all loads. Ideal solution for critical loads

**Wide input voltage range (110-300 V AC)**  
Online operation with very low and high voltages without using battery power

**Input power factor correction (PF=0.99)**  
Saves energy and money.

**High output power factor PF=0.8 up to 15%**  
More Power at output in comparison to standard ups systems supports more computers

**Intelligent charger design for optimum battery performance**  
Longer battery life, lower operation costs

**High performance microprocessor.**  
Reliable operation during load and voltage changes.

**Perfect match for difficult power conditions**

6 - 10 kVA (1/1)



10 kVA (3/1)



20 kVA (3/1)



# UPS

6 - 10 - 20 kVA online

## New Generation Newtech Newtech PRO

tuncmatik



Comparison Table

	Standart UPS	NEWTECH PRO	BENEFITS
Selectable output voltage	-	208 V/220 V/230 V/240 V	Can easily adjust to regional voltages
Frequency convertor mode	-	50Hz or 60Hz, in 46~64Hz scale	Can be used in many countries and systems
ECO Mode	-	Yes	High efficiency, saving energy cost
Output power factor	PF 0,7	PF 0,8	%15 more output power
Input power factor	PF0,95	PF 0,99	Saves energy, does not cause mains disturbances
Dynamic load response time	150msn	60 msn	Can support different and critical loads
Emergency power off (EPO)	-	Yes	Safer for emergency situations
Communication port	RS232	USB & RS232	Communication flexibility
User interface	LCD Screen	Multi function LCD panel	More information available, programmable
SNMP port	-	Yes	Remote monitoring and control
Programmable outlet	-	Yes	Shuts down unimportant loads and gives more back up time for critical loads
Selectable by-pass range	-	Yes	Flexible usage at ECO mode



tuncmatik

Professional Specifications  
Newtech PRO

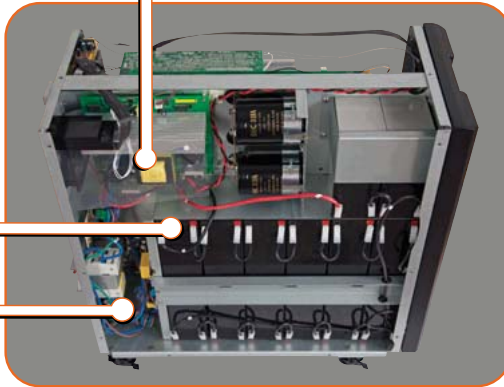
UPS  
6 - 10 - 20 kVA online

### 6 kVA (1/1) Internal Structure

**Battery Charger**  
It can charge high capacity battery banks with 4 Ampere charge capacity. Provides longer back up time.

**YUASA batteries**  
One of the best battery brand in the world (for standard back up products)

**Input and output EMI filter**  
Suppresses RF noise

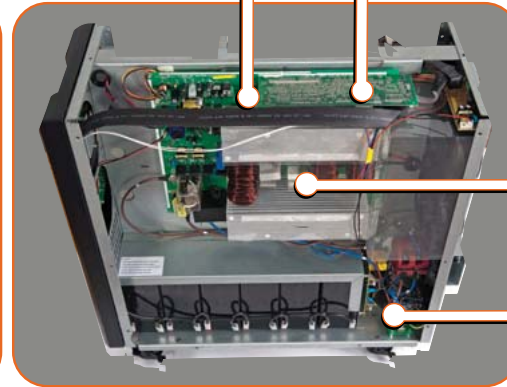


**Inverter**  
Generates pure sinus in mains and battery modes

**Control card with high speed CPU**  
Provides reliable operation during variable and difficult conditions.

**PFC circuit**  
Increases input power factor and saves energy

**Programmable output relay**  
Programmable output shuts off unimportant loads and saves more back up time for critical loads

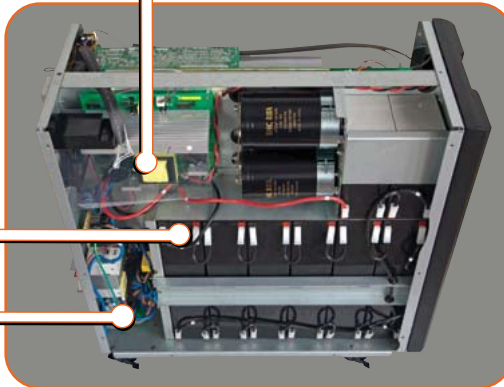


### 10 kVA (1/1) Internal Structure

**Battery Charger**  
It can charge high capacity battery banks with 4 Ampere charge capacity. Provides longer back up time.

**YUASA batteries**  
One of the best battery brand in the world (for standard back up products)

**Input and output EMI filter**  
Suppresses RF noise

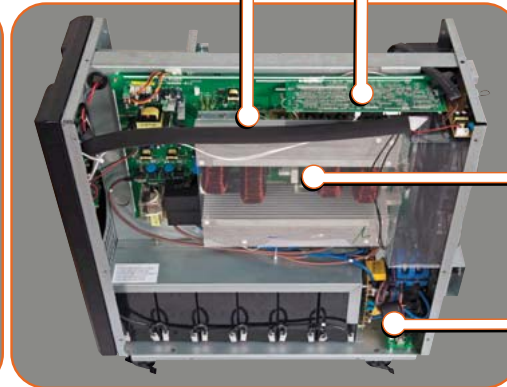


**Inverter**  
Generates pure sinus in mains and battery modes

**Control card with high speed CPU**  
Provides reliable operation during variable and difficult conditions.

**PFC circuit**  
Increases input power factor and saves energy

**Programmable output relay**  
Programmable output shuts off unimportant loads and saves more back up time for critical loads



# UPS

6 - 10 - 20 kVA online

## Professional Specifications Newtech PRO

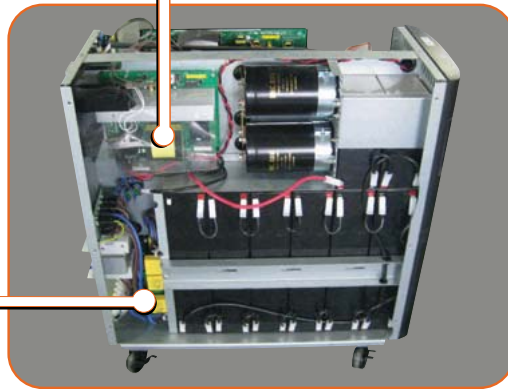
tuncmatik



### 10 kVA (3/1) Internal Structure

**Battery charger**  
It can charge high capacity battery banks with 4 Ampere charge capacity. Provides longer back up time.

**Input EMI filter**



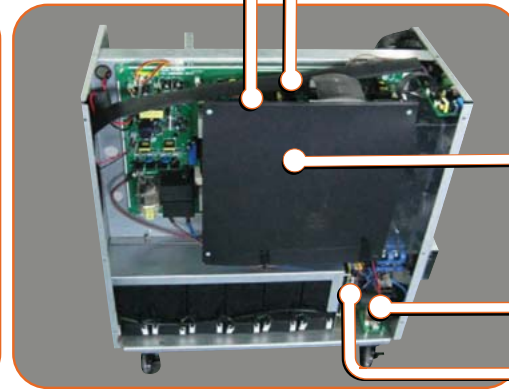
**Inverter**  
Generates pure sinus in mains and battery modes

**Control card with high speed CPU**  
Provides reliable operation during variable and difficult conditions

**PFC circuit**  
Increases input power factor and saves energy

**Programmable output relay**  
Programmable output shuts off unimportant loads and saves more back up time for critical loads

**Output EMI filter**

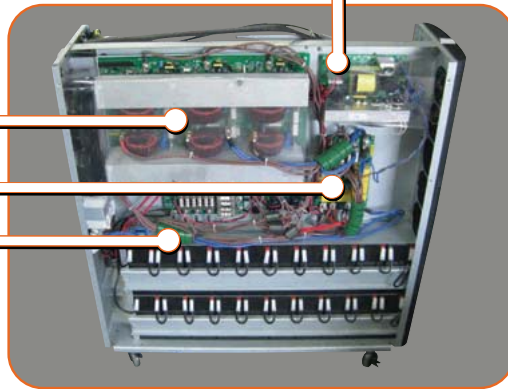


**Battery charger**  
It can charge high capacity battery banks with 8 Ampere charge capacity. Provides longer back up time.

**PFC circuit**  
Increases input power factor and saves energy

**Input EMI filter**

**Battery EMI filter**



### 20 kVA (3/1) Internal Structure

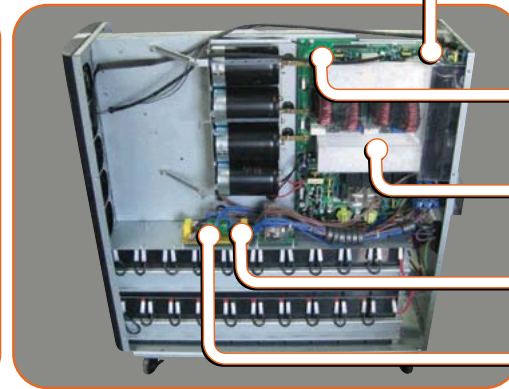
**USB/RS232 communication card**

**Control card with high speed CPU**  
Provides reliable operation during variable and difficult conditions

**Inverter**  
Generates pure sinus in mains and battery modes

**Programmable output relay**  
Programmable output shuts off unimportant loads and saves more back up time for critical loads

**Output EMI filter**



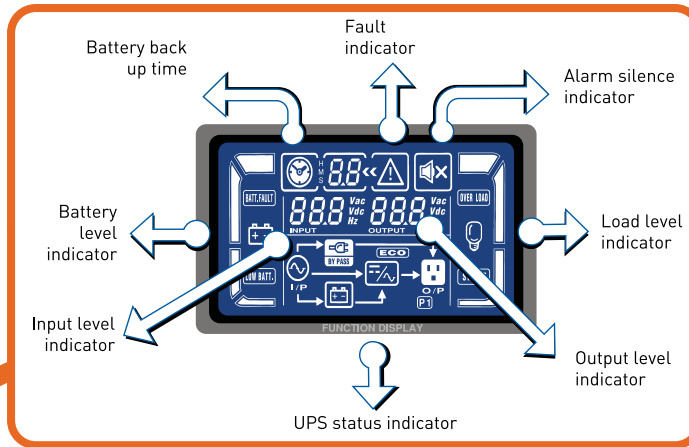


tuncmatik

# Innovative Design Newtech PRO

# UPS 6 - 10 - 20 kVA online

Everything is under control with multi function, easy readable LCD panel. New advanced LCD panel shows functions, input and output values and alarms.



## MULTI FUNCTION BUTTONS

208 V / 220 V / 230 V / 240 V selectable output voltage. Can work efficiently in different areas.



50/60 Hz frequency converter mode can be used in many countries and systems.

In ECO Mode, when mains is in limits ups supports load via bypass, because of high efficiency saves money.



# UPS

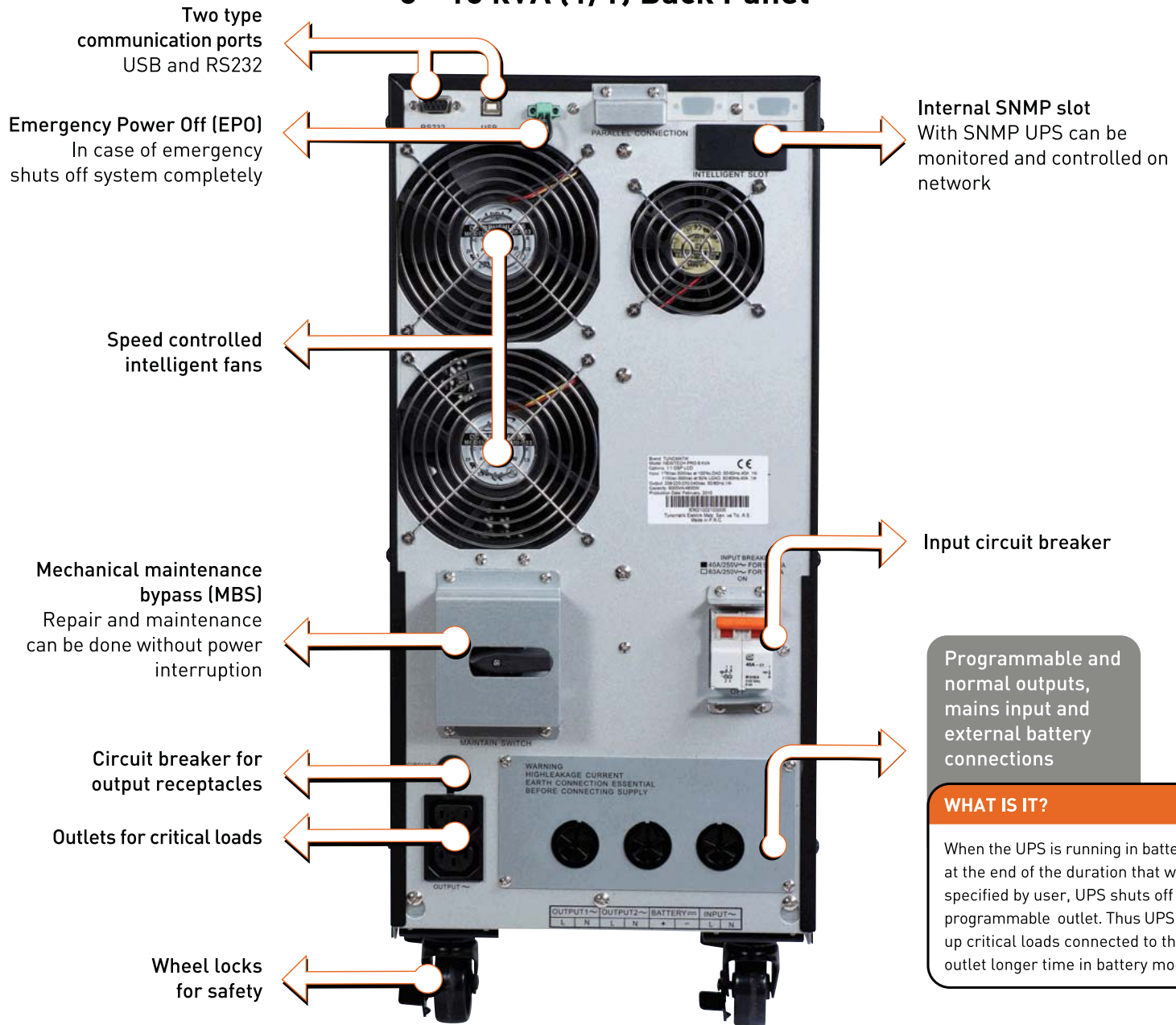
6 - 10 - 20 kVA online

## Professional Specifications Newtech PRO

tuncmatik



### 6 - 10 kVA (1/1) Back Panel



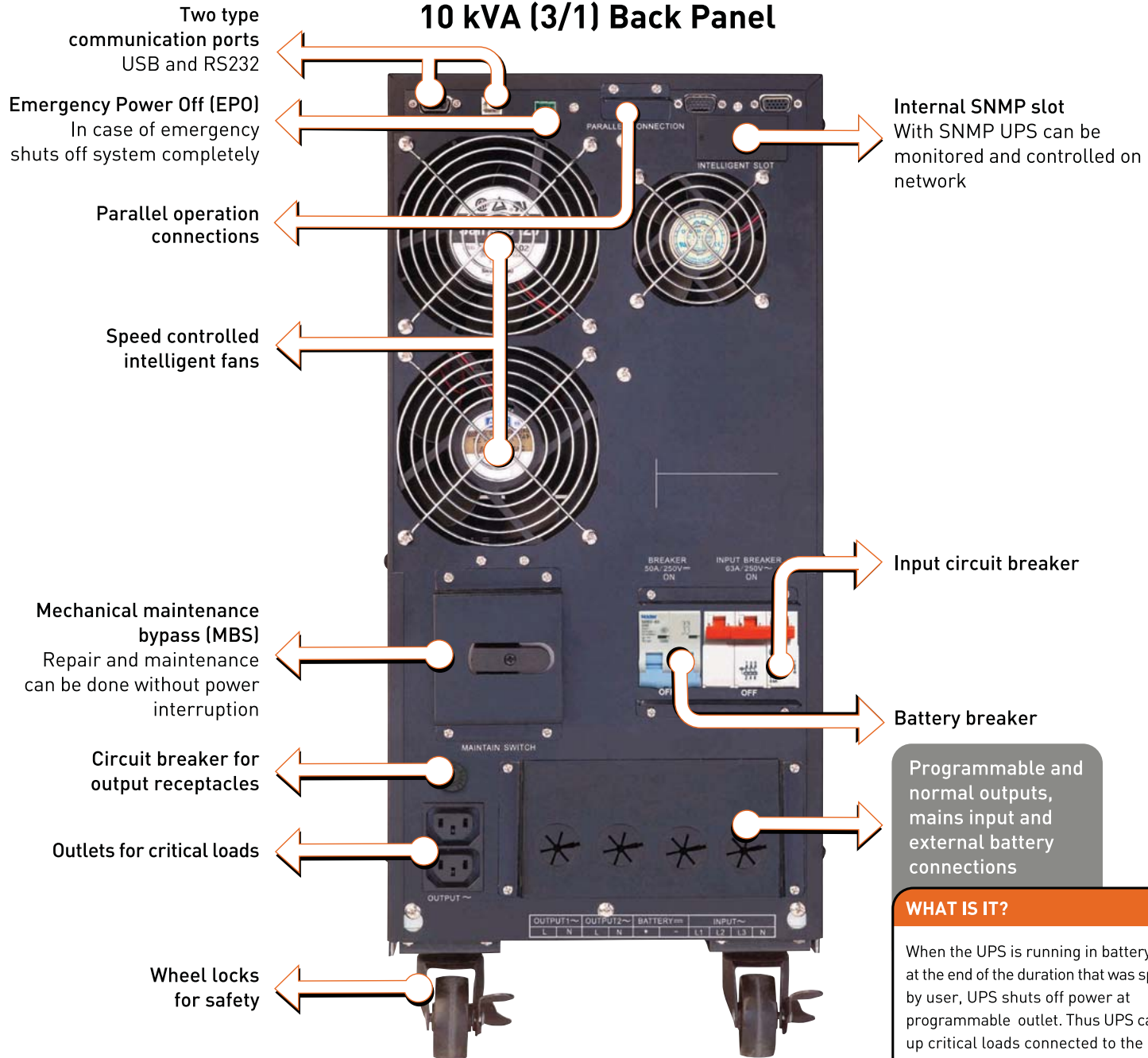


tuncmatik

# Professional Specifications Newtech PRO

# UPS 6 - 10 - 20 kVA online

## 10 kVA (3/1) Back Panel





# UPS

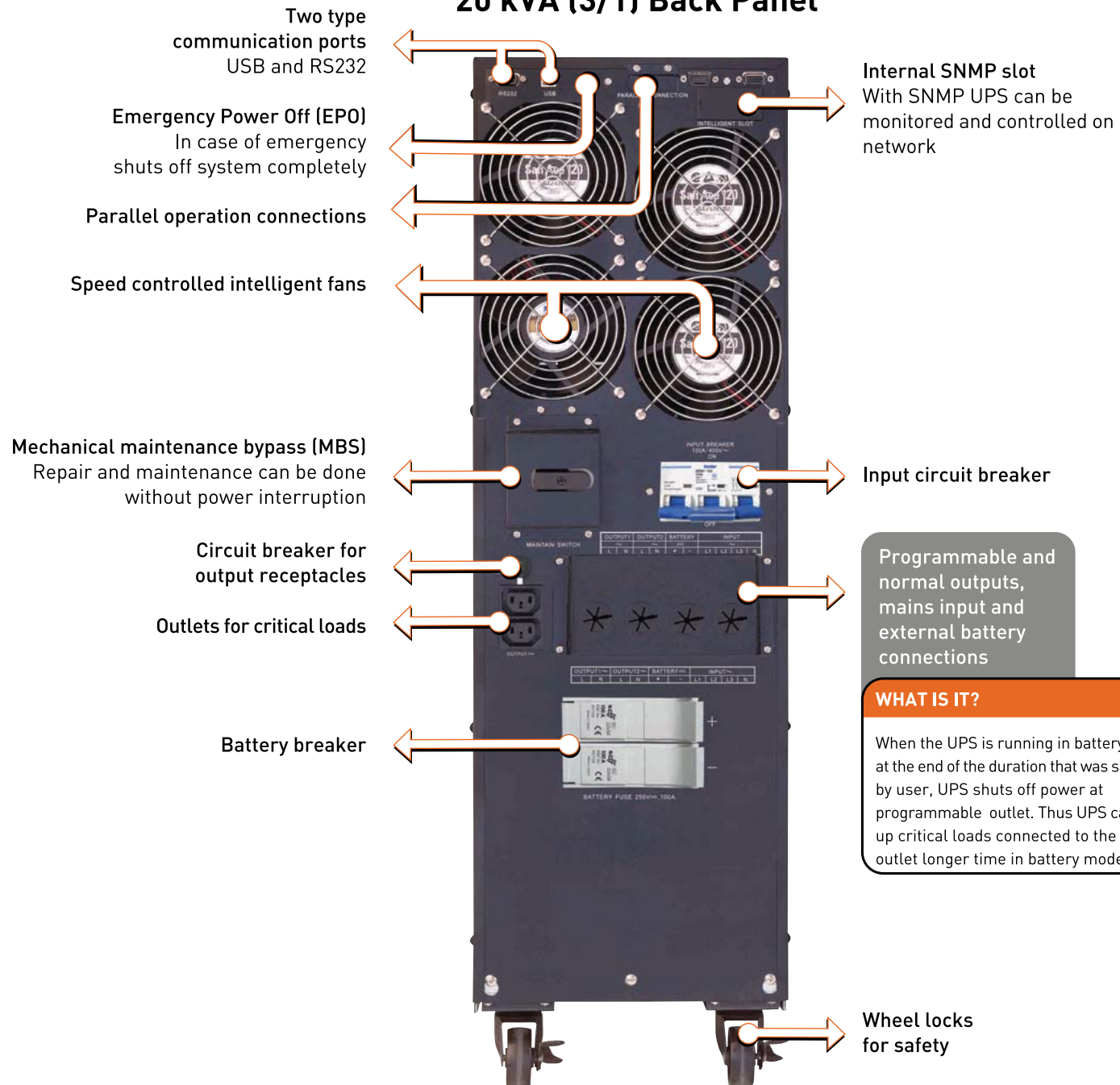
6 - 10 - 20 kVA online

## Professional Specifications Newtech PRO

tuncmatik



### 20 kVA (3/1) Back Panel





tuncmatik

# Professional Specifications Newtech PRO

# UPS 6 - 10 - 20 kVA online

CAPACITY		6000 VA / 4800 W	10000 VA / 8000 W
<b>INPUT</b>			
Voltage Range	Low Line Loss	110 VAC ± % 3 at 50% Load; 176 VAC ± % 3 at 100% Load	
	Low Line Comeback	Low Line Loss Voltage + 10V	
	High Line Loss	300 VAC ± % 3	
	High Line Comeback	High Line Loss Voltage - 10V	
Frequency Range		46 Hz ~ 54 Hz @ 50Hz system; 56 Hz ~ 64 Hz @ 60Hz system	
Phase		Single phase with ground	
Power Factor		≥ 0.99 at 100% Load	
<b>OUTPUT</b>			
Output Voltage		208 / 220 / 230 /240 VAC	
AC Voltage regulation		± 1%	
Frequency Range (Synchronized Range)		46 Hz ~ 54 Hz @ 50Hz system 56 Hz ~ 64 Hz @ 60Hz system	
Frequency Range (Battery mode)		50 Hz ± 0.1 Hz or 60Hz ± 0.1 Hz	
Overload	AC Mode	100% ~ 110% : 10 min, 110% ~ 130% : 1 min, > %130 : 1 sec	
	Battery Mode	100% ~ 110% : 30 sec, 110% ~ 130V : 10 sec, > %130 :1 sec	
Current Crest Ratio		3:1 max	
Harmonic Distortion		≤ 3% @ 100% Linear Load; ≤ 6% @ 100% Non-linear Load	
Transfer time	Line ↔ Battery	0 ms	
	Invertor ↔ By-pass	0 ms	
	Invertor ↔ ECO	< 10 ms	

CAPACITY		6000 VA / 4800 W	10000 VA / 8000 W		
<b>EFFICIENCY</b>					
AC Mode		> %89			
Battery Mode		> %88			
<b>BATTERY</b>					
Standard Model	Type & Numbers	12 V / 7 Ah x 20	12 V / 9 Ah x 20		
	Recharge Time	7 hours recover to 90% capacity	9 hours recover to 90% capacity		
	Charging Current	1.0 A ± 10% (max.)			
	Charging Voltage	14.4 V ± 1%			
Long-run Model	Type	Depending on applications			
	Number	18 - 20			
	Charging Current	4.0 A ± 10% (max.)			
	Charging Voltage	14.4 V ± 1%			
<b>PHYSICAL</b>					
Model		6 K	6 KL	10 K	10 KL
Outline	Dimension, DxWxH	592 x 250 x 576			
	Net Weight (kgs)	81	25	83	27
Packaging	Dimension, DxWxH	700 x 385 x 815	690 x 370 x 670	700 x 385 x 815	690 x 370 x 670
	Net Weight (kgs)	88	28	90	30
<b>ENVIRONMENT</b>					
Operation Temperature		0 ~ 40°C (the battery life will down when >25°C)			
Operation Humidity		< 95 % and-condensing			
Operation Altitude		< 1000m			
Acoustic Noise Level		Less than 55 dB @ 1 meter	Less than 58 dB @ 1 meter		
<b>MANAGEMENT</b>					
Smart RS-232 or USB		Supports Windows® 98/2000/2003/XP/Vista/2008, Windows® 7, Linux, Unix ve MAC			
Optionel SNMP		Power management from SNMP manager and web browser			



6 - 10 - 20 kVA online

# Technical Specifications Newtech PRO

tuncmatik



CAPACITY		10000 VA / 8000 W	20000 VA / 16000 W
<b>INPUT</b>			
Voltage Range	Low Line Loss	110 VAC $\pm$ % 3 at 50% Load; 176 VAC $\pm$ % 3 at 100% Load	
	Low Line Comeback	Low Line Loss Voltage + 10V	
	High Line Loss	300 VAC (L-N) $\pm$ % 3	
	High Line Comeback	High Line Loss Voltage - 10V	
Frequency Range		46 Hz ~ 54 Hz @ 50Hz system; 56 Hz ~ 64 Hz @ 60Hz system	
Phase		Three phase with ground	
Power Factor		$\geq$ 0.99 at 100% Load	
<b>OUTPUT</b>			
Output Voltage		208 / 220 / 230 /240 VAC	
AC Voltage regulation		$\pm$ 1%	
Frequency Range (Synchronized Range)		46 Hz ~ 54 Hz @ 50Hz system 56 Hz ~ 64 Hz @ 60Hz system	
Frequency Range (Battery mode)		50 Hz $\pm$ 0.1 Hz or 60Hz $\pm$ 0.1 Hz	
Overload	AC Mode	100% ~ 110% : 10 min, 110% ~ 130% : 1 min, > %130 : 1 sec	
	Battery Mode	100% ~ 110% : 30 sec, 110% ~ 130V : 10 sec, > %130 :1 sec	
Current Crest Ratio		3:1 max	
Harmonic Distortion		$\leq$ 2% @ 100% Linear Load; $\leq$ 5% @ 100% Non-linear Load	
Transfer time	Line $\leftrightarrow$ Battery	0 msn	
	Invertor $\leftrightarrow$ By-pass	0 msn	
	Invertor $\leftrightarrow$ ECO	< 10 msn	

CAPACITY		10000 VA / 8000 W	20000 VA / 16000 W		
<b>EFFICIENCY</b>					
AC Mode		> %89	> %89		
Battery Mode		> %86	> %87		
<b>BATTERY</b>					
Standard Model	Type & Numbers	12 V / 9 Ah x 20	12 V / 9 Ah x 40		
	Recharge Time	9 hours recover to 90% capacity			
	Charging Current	1.0 A $\pm$ %10 (max.)	2.0 A $\pm$ %10 (max.)		
	Charging Voltage	14.4 V $\pm$ 1%			
Long-run Model	Type	Depending on applications			
	Number	18 - 20			
	Charging Current	4.0 A $\pm$ %10 (max.)	8.0 A $\pm$ %10 (max.)		
	Charging Voltage	14.4 V $\pm$ %1			
<b>DIMENSIONS AND WEIGHT</b>					
Model		10 K	10 KL	20 K	20 KL
Outline	Dimension, DxWxH	592 x 250 x 576		815 x 250 x 826	592 x 250 x 576
	Net Weight (kgs)	83	28	164	37
<b>ENVIRONMENT</b>					
Operation Temperature		0 ~ 40°C (the battery life will down when > 25°C)			
Operation Humidity		< 95 % and-condensing			
Operation Altitude		< 1000m			
Acoustic Noise Level		Less than 58 dB @ 1 meter		Less than 60 dB @ 1 meter	
<b>MANAGEMENT</b>					
Smart RS-232 or USB		Supports Windows® 98/2000/2003/XP/Vista/2008, Windows® 7, Linux, Unix ve MAC			
Optionel SNMP		Power management from SNMP manager and web browser			

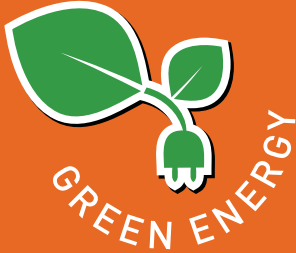
## Tuncmatik

International Enerji Çözümleri  
Sanayi ve Ticaret A.Ş.

### Head Office

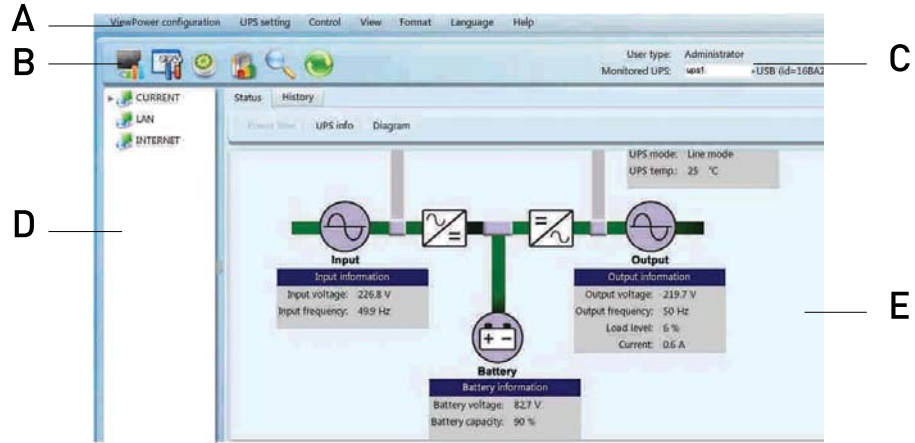
Yenişehir Mahallesi  
İmar İskan Caddesi No: 3  
34779 Ataşehir/İstanbul-Turkey  
phone : +90.216.415.04.97  
fax : +90.216.420.35.29

www.tuncmatik.com  
export@tuncmatik.com



tuncmatik products offer  
energy savings of up to 30%,  
helping you consume less of a  
dwindling resource.

## USER FRIENDLY VIEWPOWER SOFTWARE



- A. Function Menu
- B. Shortcut Menu
- C. Monitored UPS Data
- D. UPS Navigation Menu
- E. Main Window

There are 9 language options,  
it is very easy to use software.

UPS remotely monitored and  
programmed.

### Compatible with:

Windows 98, Windows 2000,  
Windows 2003, Windows XP,  
Windows VISTA, Windows 2008,  
Windows 7, RedHat Linux 8 and  
newer, RedHat Enterprise AS3 and  
newer, Suse Linux and newer,  
Ubuntu 6.10 and newer, Fedora 5  
and newer, MacOSX 10.3, 10.4, 10.5



**tuncmatik**  
www.tuncmatik.com pure power